



# **Network Video Recorder Quick Installation Guide**

## **DS-4300 Pro+ Series**

DS-4332/4336/4342/4349/4356/4364 Pro+

**Quality Service Group**

1.0.0.8

Information in this document is subject to change without notice.

© Copyright 2015, DIGIEVER Corporation. All rights reserved.

## Quick Installation Guide

Thank you for choosing DIGIEVER NVR Network Video Recorder. The following quick guide will lead you to complete the installation and configuration of the NVR. Please read the following description carefully.

### ❶ Pre-installation Notice

Please make sure the following items are prepared for installing DIGIEVER NVR DS-4300 Pro+ Series.

- Network connection
- Configuration of network cameras
- Compatibility of network cameras
- Computer for configuring DIGIEVER NVR
- 1-4 hard disks
- Compatibility of hard disk with DIGIEVER NVR
- 1 slotted screwdriver and 1 Philips screwdriver


\*For camera compatibility, please check our website

<http://www.digiever.com/support/compatibility.php>

### ❷ Remote PC System Requirements

The following are minimum system requirements for a personal computer to operate the DIGIEVER NVR in better performance:


- **Operating System**  
Microsoft® Windows® Vista/ 7 / 8 (32 and 64-bit)
- **Browsers (32-bit) in Windows OS**  
Microsoft® Internet Explorer 8.0 or above, Firefox 25 or above, Opera 17.0 or above, Safari5.1.7 or above
- **CPU**  
For channels under 16 : Intel® Dual core CPU 3.0 GHz or above  
For channels over 16: Intel® i5/i7 CPU 3.3 GHz or above
- **Network**  
Minimum 10/100 Ethernet (Gigabit Ethernet is recommended)

 **Note:** \* User is suggested to connect cameras and NVR with Gigabit switch.

- **Memory**  
For channels under 16 : DDR3 4G or above  
For channels over 16: IDDR3 8G or above

- **Graphics Adapter**

AGP or PCI-Express, minimum 1024x768, 16 bit colors, 1G memory or above

 **Note:** It is highly recommended to use a graphics adaptor which provides higher than resolutions 1024 x 768 in order to experience the full benefits of the software.

- Make sure the display DPI setting is set to default at 96DPI
- To set DPI value, right-click on desktop, choose “**Settings**” tab >> “**Advanced**” >> “**General.**”

- **CD-ROM Drive**

It is necessary to read the operating instructions in the provided CD-ROM.







- **Adobe Reader**

It is necessary to read the operating instructions in the provided CD-ROM.

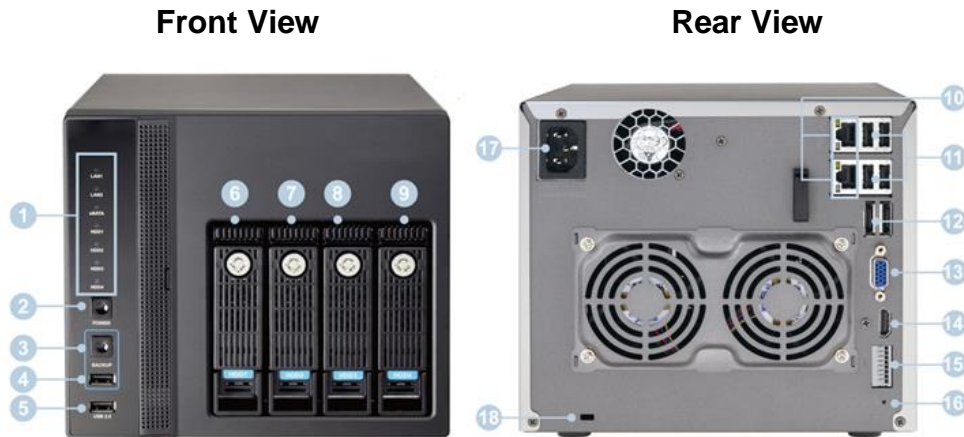
The audio function will not work if a sound card is not installed in the PC.


Audio may be interrupted depending on network traffic.

## ③ Package Contents

<p>① NVR Network Video Recorder</p>  A black NVR Network Video Recorder with four drive bays and a DIGIEVER logo on the front panel.	<p>② Power Cord</p>  A black power cord with a standard three-prong electrical plug.
<p>③ Ethernet Cable</p>  A coiled green Ethernet cable with RJ45 connectors on both ends.	<p>④ Screw Bag</p>  A collection of screws and washers, including several black screws and four silver washers.
<p>⑤ Hard Disk Lock</p>  A metal hard disk lock with two locking mechanisms and a keyhole.	<p>⑥ Product CD</p>  A blue CD-ROM with the text "Document and Utility Installation Guide" printed on it.

## ④ Hardware Description



1. LED indicators: LAN1, LAN2, eSATA, HDD1, HDD2, HDD3, HDD4
2. Power button
3. USB BACKUP - Auto video backup
4. USB 2.0 x 1 (Support auto video backup)
5. USB 2.0 x 1
6. HDD1
7. HDD2
8. HDD3
9. HDD4
10. Gigabit LAN x 2
11. USB 2.0 x 4
12. eSATA x 2 (reserved)
13. VGA
14. HDMI
15. DI/DO (4 in 2 out)  
 ↓ Top to bottom: Vcc5V, GND, DI-1, DI-2, DI-3, DI-4, DO-1, DO-2
16. Reset button
17. Power connector
18. K-lock security slot

## ⑤ Hard Disk Installation

Please follow the steps as illustrated below to install the hardware:

- ① Please take out the disk tray from NVR.
- ④ Please connect the Ethernet cable to the port of Giga LAN.



- ② Install the hard disk in each tray and lock the disk with four screws. Ensure the disk holes match the holes at the base of disk tray.



- ⑤ Please connect the power cord to power connector.



- ③ Please insert the disk tray into NVR and push it to the end.



- ⑥ Turn on the server and there is a beep to indicate the NVR is in booting process. Please wait for minutes until NVR beeps another time. The installation of NVR is complete right now.



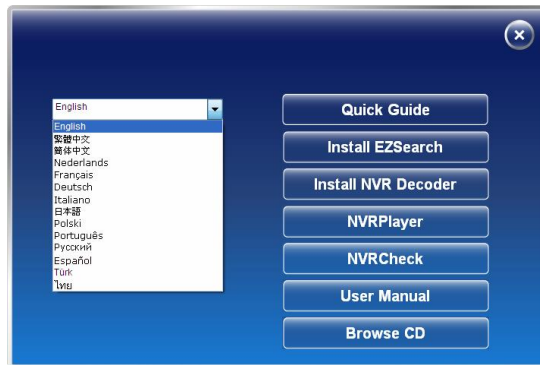
## ⑥ Connection to DIGIEVER NVR

Please insert the product CD-ROM on a PC to install EZ Search and S-NVR Decoder. Finally, you can start Quick Configuration on a web page.

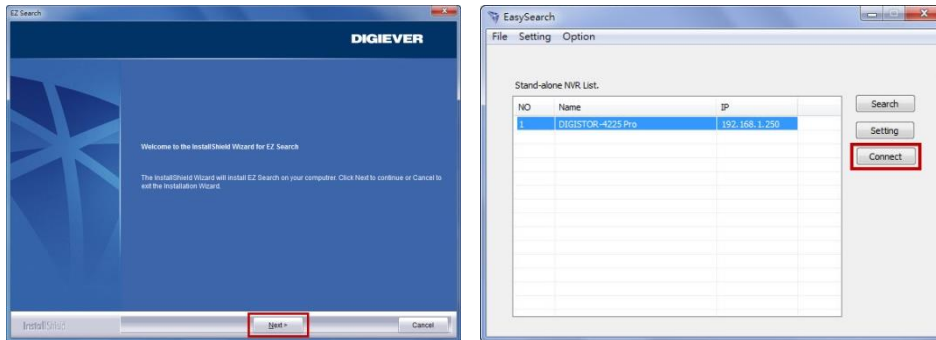
- Install EZ Search for finding NVR in the network.
- Install S-NVR Decoder.
- Connect to the configured NVR and install the ActiveX control.

### ① Install EZ Search

Please execute the product CD and click “Install EZ Search.”

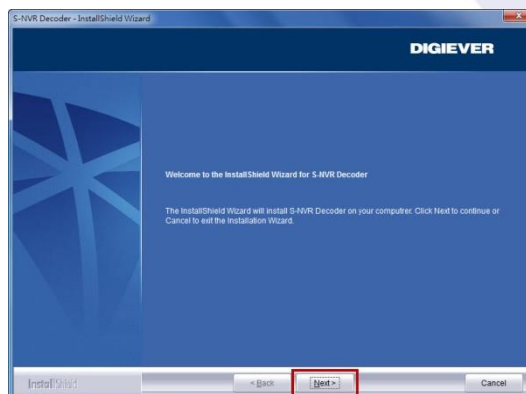


Follow the instructions to install and the EZ Search will run automatically.



### ② Install S-NVR Decoder

Click “Install S-NVR Decoder” and follow the instructions to setup.



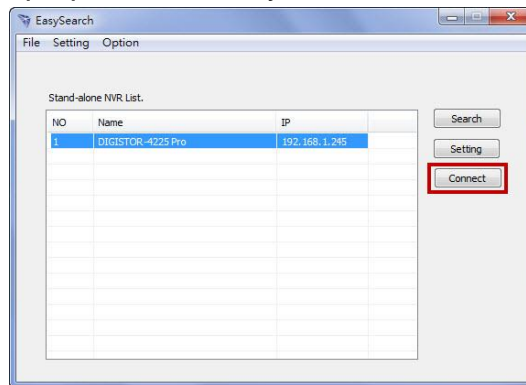
## ③ Connect to NVR

### 1. Connect to DIGIEVER NVR

After setting the EZ Search and S-NVR Decoder, the user can connect to the monitoring page by the following two options.

#### 1) EZ Search

Once you click "**Connect**" or double click the selected NVR list, the IE browser will pop up automatically.



#### 2) IE browser

Log in to the system by entering its IP address in IE browser.



#### **Note: There are 2 methods to set network:**

- **Obtain an IP address automatically (NVR Default)**

Obtain an available dynamic IP address assigned by a DHCP server. If this option is selected, DIGIEVER NVR will automatically obtain an available dynamic IP address from the DHCP server once it connects to the network.

- **Specify an IP address**

If there is no DHCP server existing in network environments, the static IP address will be given as **192.168.1.245**. It should be adaptable in most networking environment, and user can choose to maintain the default IP address or change it in this page. However, it's recommended setting different IP address of DIGIEVER NVR if there is more than one DIGIEVER NVR in the same LAN.

## 2. Enter a user name and password

Log in the NVR with the default administrator account (user name: admin,

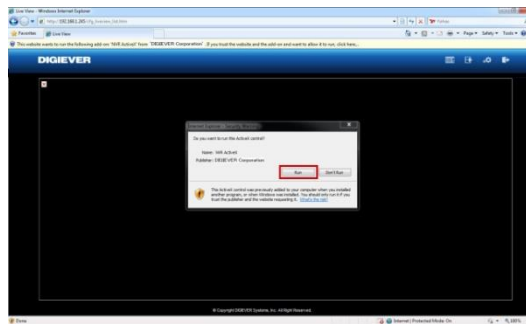


password: admin).



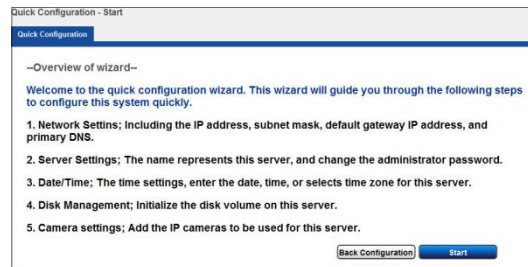
A blue login dialog box with a white border. It contains the following elements: a label 'User Name' followed by a white text input field; a label 'Password' followed by a white password input field; a checkbox labeled 'Remember Username and Password'; and two buttons at the bottom, 'Log in' and 'Cancel', both with a grey gradient and white text.

3. **Install the ActiveX control** in order to successfully view the interface of NVR from IE browser

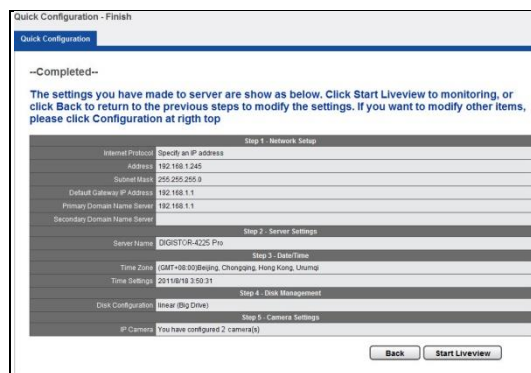


## 7 Quick Configuration

After you install the ActiveX control, the system will direct you to set Quick Configuration in 5 steps. Follow the instructions of the Overview of wizard to complete the system setup.



Once the five steps of Quick Configuration are complete, you can click **“Start Liveview”** to start monitoring.



For further details of Quick Configuration, please refer to the user manual. When the live view is displayed, you have successfully installed the DIGIEVER NVR. Congratulations!